

# Perpetua

Regular

ABCDEFGHIJKLMNOPQRSTUVWXYZ

abcdefghijklmnopqrstuvwxyz

1234567890

@#\$%\*

**Bold**

**ABCDEFGHIJKLMNOPQRSTUVWXYZ**

**abcdefghijklmnopqrstuvwxyz**

**1234567890**

**@#\$%\***

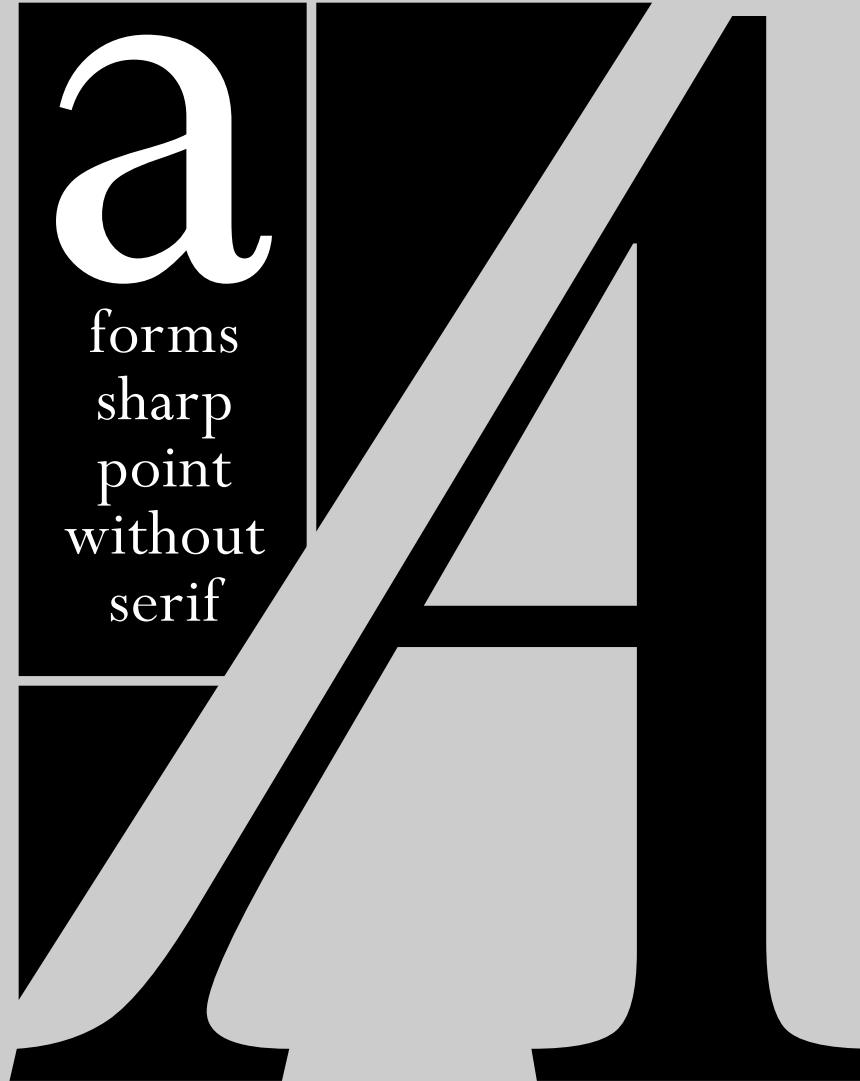
*Italic*

*ABCDEFGHIJKLMNOPQRSTUVWXYZ*

*abcdefghijklmnopqrstuvwxyz*

*1234567890*

*@#\$%\**



Perpetua was made in 1929 by the English sculptor, typeface designer, and print maker, Eric Gill. The font itself is a serif typeface often classified as a transitional serif font.

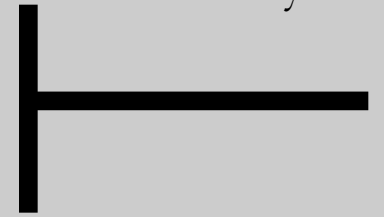
A transitional serif is a series of typefaces common around the mid-19th century until the start of the nineteenth.

They are a mix between the old and the modern styles, hence the name “transitional”.



Regular

Dual-storey



*Italic*

Single-storey

